

HIDEITALIA  
HIGH END LEATHER BY CLUB COLLECTIONS

presents



# Renew!



HIDEITALIA  
HIGH END LEATHER BY CLUB COLLECTIONS  
Contact: [info@hideitalia.com](mailto:info@hideitalia.com)  
Web: [www.hideitalia.com](http://www.hideitalia.com)  
Offices: Bangalore, Mumbai, New Delhi



CLUB COLLECTIONS EXPORTS PVT LTD

## What makes us stand out?

**Experience:** With over 3 decades of experience in working with Leather, we are proud to be the pioneers in introducing Italian leather to the Indian upholstery industry.

**Integrity:** Our goodwill in the market says it all!

**Quality Assurance:** Top quality, for sure.

**Warehousing:** We keep ample stock of our products across various qualities and colors, to ensure availability all through the year

**Prompt Delivery:** Our partnership with leading C&F and logistics companies, and our wide distribution network ensures fast and safe delivery of our products to the final destination.

**Price:** Our products are priced very competitively making us the biggest distributors for Italian leather in India since 1996

## Leather care



**Protect from:**  
Direct sunlight  
Excessive heat  
Sharp objects



**Never:**  
Do not soak the leather  
Avoid all chemical products



**Regular care & cleaning**  
Vacuum clean regularly  
Damp cloth for regular cleaning  
Mild soap & cloth for thorough cleaning  
Polish with dry cloth



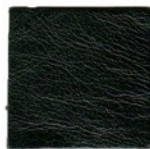




Corrected grain bovine leather with a light pull up effect, this leather has a very rich and premium look.  
Average size is 47sqft and average thickness is 1.1-1.2mm

**URBAN. CHIC. FUN!**

# Tango



GREEN



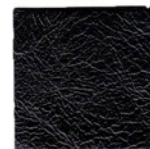
INDIGO



GOLD



WHISKY



BLACK



BOROLO



RED







Tanned from high quality bovine of European origin,  
Montana is a full grain aniline leather with light pull up effect.  
This plush leather, recommended for high end furniture, spells  
pure sophistication and luxury.

Average size of hide is 475ft  
Average thickness: 1.3-1.5mm

# Montana

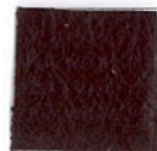
Pure Sophistication



CHESTNUT



CHOCOLATE



BURGUNDY



BLACK







# dollaro

Top quality bovine hides with bold print. This leather has a great body and drapes beautifully on the frame, making the furniture look inviting and comfortable.  
Average size is 48sqm; average thickness is 1.3-1.5mm



BIANCO



LATTE



CREMA



CORNFLAKE



PANNA



TERRA



BRANDY



BROWN



BLACK



VIOLET



YELLOW GREEN



TORATORA



CORAL





# NAPPA

NAPPA IS A LIGHT PRINTED FULL GRAIN LEATHER THAT HAS A FULL HANDLE AND A SMOOTH TOUCH, GIVING EVERYTHING IT CLADS, A CLASSY MATTE FINISH



GOLD



CHOCO



MARBLE



PEARL

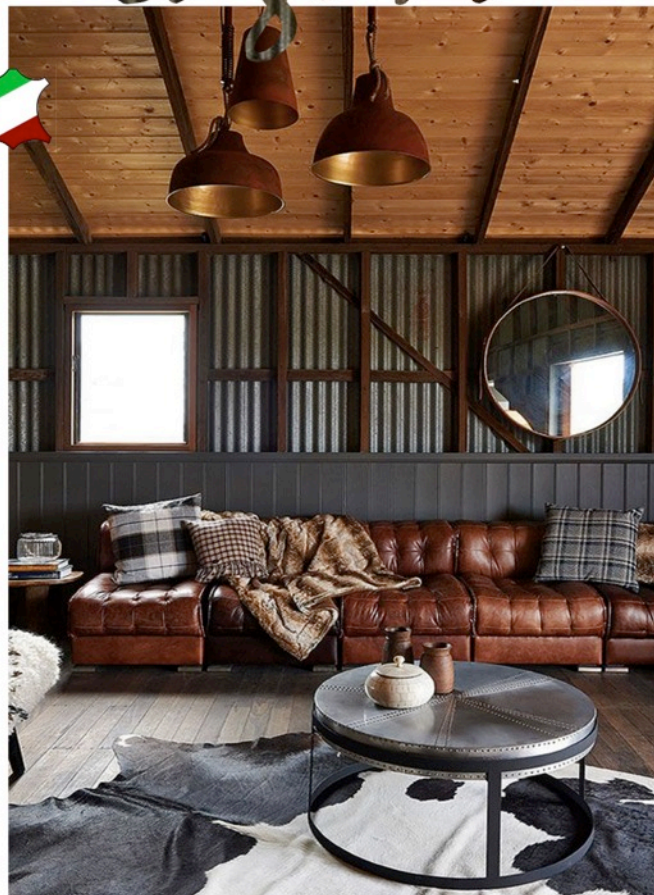


BLACK





# Laguna

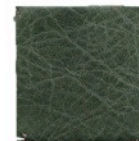


HAIR ON HIDES MAKE GREAT AREA RUGS!  
CONTACT HIDEITALIA TO VIEW THE FULL COLLECTION

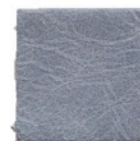
LAGUNA IS A CORRECTED GRAIN BOVINE LEATHER, TREATED WITH WAX AND OILS THAT GIVE IT A 2 TONE EFFECT WITH LIGHT PULL UP. FURTHER THE PRODUCT IS DRY MILLED TO PERFECTION FOR A WEATHERED LOOK. AVERAGE SIZE IF A HIDE IS 47SFT AND AVG THICKNESS IS 0.9-1.0MM



CELERY



GREEN



LAVENDA



BLUE



COBBLESTONE



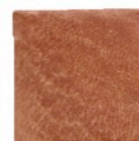
BROWN



DARK BROWN



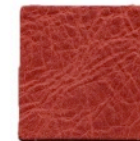
WINE



DESERT



METALLIC GOLD



COGNAC

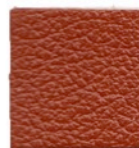


RUST



# Antique

Printed and corrected grain bovine leather with a 2 tone effect accentuated by a glossy finish, our Antique collection of leather adds new life to classic styles. Average size of hide is 47sqft and average thickness is 1mm



CANELLA



BRIT GREEN



COPPERY



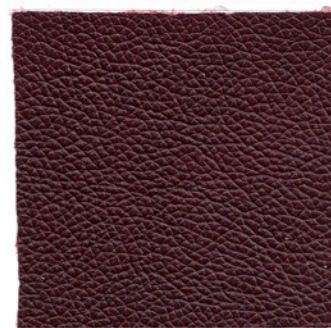
SQUIRREL



EXTRA DARK



CONKER





For further information, please contact Hideitalia  
[www.hideitalia.com](http://www.hideitalia.com)

Thank You